

**SL 115 Classic Slit Lamp.  
Zeiss Optics -  
superb and affordable.**



# Know-how used consistently.



## Low price, high performance

Carl Zeiss slit lamps convince by high optical performance and operating comfort. Also the SL 115 Classic combines these benefits and thus provides ideal conditions for all routine examinations and comfortable contact lens fitting. The price/performance ratio of this routine instrument is extremely favorable.

## Optics in best light

The high resolution of details at high contrast and the fine, highly precise slit convinces at first sight. Besides, the SL 115 Classic Slit Lamp has a large illuminated and visual field. **High eyepoint** eyepieces ensure high operating comfort even for spectacle wearers.



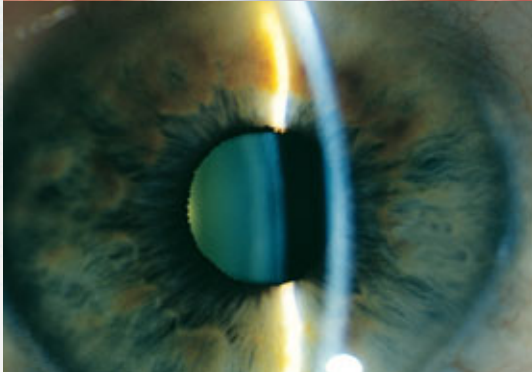
# SL 115 Classic Slit Lamp.

## For diagnosis and contact lens fitting.



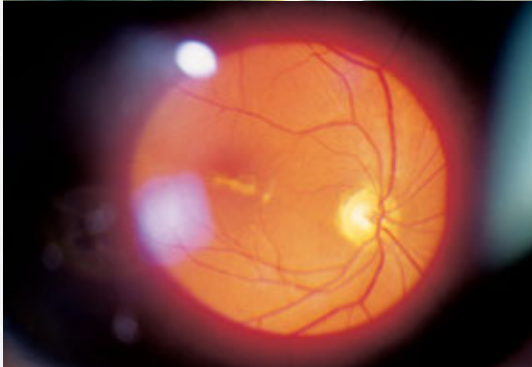
### Convincing light economy

The optical system features excellent transmission thus delivering additional light and allowing unrestricted documentation of all findings while keeping low the light load on the patient's eyes in the examination. The instrument comes with a standard swivel-type yellow filter which is particularly useful for contact lens fitting.



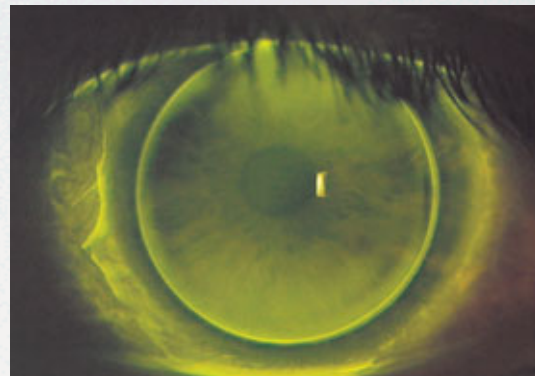
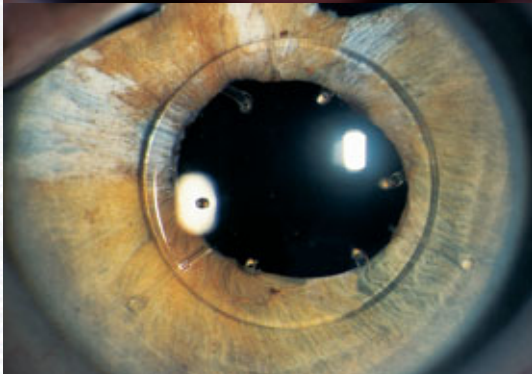
### Ergonomic design for operator and patient

All controls are optimally located. Slit and operating functions are easily adjusted with one hand. The SL 115 Classic Slit Lamp design provides easy access for a thorough eye examination and when fitting contact lenses.



### Maximum protection for the patient

The SL 115 Classic Slit Lamp is a state-of-the-art instrument designed with the latest scientific findings. It provides reliable protection against UV and IR light in compliance with ISO 10939.





# SL 115 Classic Slit Lamp.



*AT 020 Applanation Tonometer*

## **View and record**

The slit lamp may be configured with a compact video adapter for video documentation. The video adapter is compatible with various types of miniature cameras.

## **Plug and play**

Ready for use in no time:

- The SL 115 Classic is completely assembled once removed from its packaging.
- The slit lamp can be set up on an instrument table or examination unit with ease.
- Secure the slit lamp to the table with 2 screws or adhesive pads.
- An integrated self-sensing power supply (for all international standard line voltages) is included with the SL 115 Classic.



*Video adapter for miniature cameras*

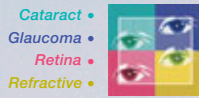


*Micrometer eyepiece*

# Technical Data.

## SL 115 Classic Slit Lamp

Magnifications	8X, 12X, 20X
Field of view	45 mm - 10 mm
Eyepiece magnification	10X high-eyepoint eyepieces, ± 8D compensation of ametropia
Width of slit image	0 - 14 mm, continuously adjustable
Length of slit image	in steps: 0.5 / 3.5 / 8 / 14 1 - 14 mm, continuously adjustable
Angle of slit image	± 90°, continuous
Decentration of slit image	variable, click stop at 0°
Swivel range of slit prism	180°, scale for angular difference, click stop at 0°
Angle of incidence	0°, horizontal
Filters	blue, green (red-free), and diffusing screen, swing-in type; UV protection filter, heat-absorbing filter
Free working distance, exit prism/patient's eye	73 mm
Travel of instrument base	vertical: 30 mm, X-axis: 110 mm, Y-axis: 90 mm
Vertical travel of chin rest	58 mm
Light source	6V 10W halogen lamp
Lamp brightness	continuously adjustable
Power requirements	100 V - 240 V ±10% (self sensing), 50 - 60 Hz
Weight	basic unit: 9.75 kg, headrest: 1.25 kg



When your patients entrust you with their eyesight, their vision and your expertise converge. For the world's most advanced surgical and diagnostic solutions in ophthalmology, you can turn to Carl Zeiss Meditec. We're committed to earning your trust anew, every day.

**Carl Zeiss Meditec AG**  
Goeschwitzer Str. 51-52  
07745 Jena  
Germany

Phone: +49 (0) 36 41 / 22 0-3 33  
Fax: +49 (0) 36 41 / 22 0-2 82  
info@meditec.zeiss.com  
www.meditec.zeiss.com

**Carl Zeiss Meditec Inc.**  
5160 Hacienda Drive  
Dublin, CA 94568  
USA

Toll Free: (800) 3 42-98 21  
Phone: +1 (925) 5 57-46 51  
Fax: +1 (925) 5 57-42 17  
info@meditec.zeiss.com  
www.meditec.zeiss.com