

VISUCAM^{lite} Digital Camera. **Simple, smart, reliable.**



A true stand-alone system.

There has been a dramatic increase in the demand for digital documentation in ophthalmology. What physicians demand these days is competent patient consultation, fast diagnosis and reliable follow-up examinations.

VISUCAM^{lite} is much, much more than a digital camera. Thanks to its comprehensive database, important patient and image data are always available. Integrated software for editing and comparison allow the fast analysis of images without any need for a second computer. Although the computer is integrated, the digital camera is never the less small and compact. The VISUCAM^{lite} computer hardware offers everything you need for control, handling and image transfer. Compared to these superb capabilities, even the large storage capacity of more than 50,000 images is almost of secondary importance.

All-in-one concept

A true all-rounder: VISUCAM^{lite} with a field angle of 45° for the standard wide view

- colored fundus images
- fluorescein angiography
- red-free, blue and red photos
- stereo photos

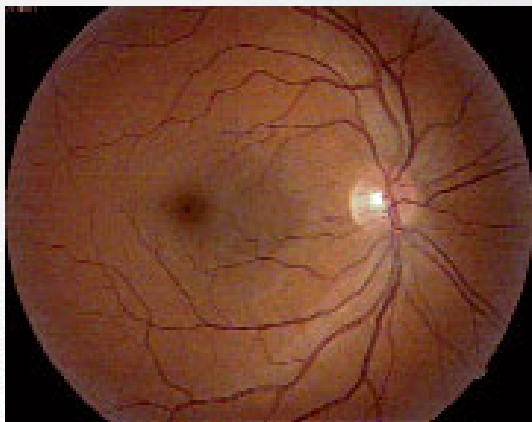
Photos of anterior segments (iris, sclera and injuries near the eye) in addition to video clips.



Analyzing and comparing.

Patient and office management

The concept incorporated in VISUCAM^{lite} will also impress patients. All the images captured are immediately available. Decisions about further therapy can be made at once. Referrals to a hospital for further diagnosis, to a photographer or to another ophthalmologist are unnecessary. The ophthalmologist's office has the patient's complete image file at its disposal. This forms the basis for optimum follow-up and legal cover.



Simple operation

Whether for system setting, image capture or comparison, the easy-to-use software guarantees fast and intuitive work. "What you see is what you get" is the motto here. The 15" LCD monitor allows optimum focusing and complete, immediate assessment of the images. The simple focusing aid through an additional camera is an absolutely ingenious solution. It allows VISUCAM^{lite} to be operated by auxiliary staff without any need for long periods of training.

Diagnosis the gentle way

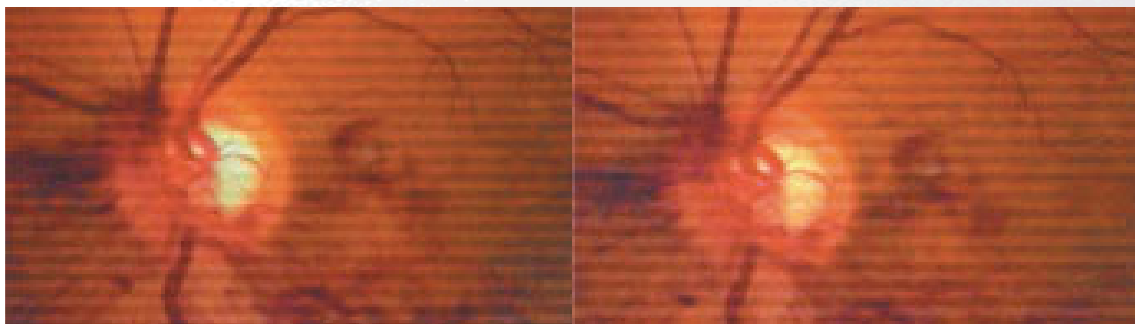
The minimum light exposure made possible by the low amount of light required for setting and image capture guarantees a really gentle approach to diagnosis. No flash is required. For patients who are particularly sensitive to light, infrared viewing light can be used. Full patient cooperation during the procedure is ensured. The IR illumination is the basis of possible non-mydratic photography. This is a decisive benefit when the administering of mydratic drugs is problematic (lack of time, drivers, glaucoma).

Analyzing and comparing

Simple patient and image management and an easy-to-understand capture mode form the basis of a fast and efficient patient throughput. A new tool is available for analysis. It enables

- fast checking of all images
- comparison between old and new images
- image editing and ZOOM
- image arrangement for printout.

VISUCAM^{lite} can be upgraded with the professional VISUPAC software for external computers. After the two systems have been networked, all the functions of VISUPAC are available, particularly those for measurement and photomontage.



AMD right on target.



All-rounder VISUCAM^{lite} is the perfect partner to PDT laser therapy. Diagnosis including fluorescein angiography and information required for lesion measurement form the basis of laser data and follow-up examinations. For fast measurement, the VISUPAC software is recommended. Placed directly beside the laser, VISUCAM^{lite} allows laser therapy with the use of fluorescein images for checking purposes.

Uncomplicated image transfer

All data are present in a digital form and are available at all times. Within a network the export of image data or the import of patient data can be performed automatically. DICOM allows all the image information to be read by external users (e.g. right/left eye, pixel size). In addition, an internal CD burner or an optional USB stick are available. USB printers can easily be connected.

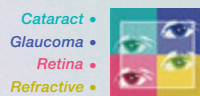
Safety and reliability

The gentle approach to diagnosis without the use of a flash gun was of prime importance in the development of the system. A separating transformer guarantees maximum medical safety for all components. The automatic storage of each image prevents the loss of image data. The VISUPAC /System is recommended for professional data management and reliable, longterm archiving.

Technical data.

Dimensions	L/B/H (mm / inches)
Basic system	390 x 300 x 680 / 15.4 x 11.8 x 26.8 (incl. headrest)
Monitor	380 x 165 x 360 / 15.0 x 6.5 x 14.2
Weight	37.5 lb. (basic system)
Capture	One 1/2" CCD each for color and black-and-white
Display	15 " LCD monitor (1,024 x 768 pixels)
Field angle	45 °
Image mask	45°, 35° Black, dark, transparent, bright
Types of image capture	Color, green, blue, red Fluorescein angiography IR observation, single image, video clip
Working distance	40 mm / 1.6 inches
Patient's eye - front lens	
Focusing range	+/-25 D, continuous
Swivel range	+/-40 °, horizontal
Operating system	Windows XP professional
Mainboard	Zeiss embedded PC
Hard disk	for more than 50,000 images
Interfaces	serial port (RS 232), parallel port, USB ports, Ethernet RJ45, VGA port
Export	Image formats dcm, bmp, jpeg, patient's list
Internal CD burner	InCD /Ahead (UDF format); CD-RW
Line voltage	100-240 V \pm 10% (self-adapting)
Frequency	50/60 Hz
Power consumption	200 VA
Instrument table	asymmetric
Accessories/ options	internal fixation device USB printers A4, USB flash drive 1 GB VISUPAC archiving and image analysis system Line isolator





When your patients entrust you with their eyesight, their vision and your expertise converge. For the world's most advanced surgical and diagnostic solutions in ophthalmology, you can turn to Carl Zeiss Meditec. We're committed to earning your trust anew, every day.

Carl Zeiss Meditec AG
Goeschwitzer Str. 51-52
07745 Jena
Germany

Phone: +49 (0) 36 41 / 22 0-3 33
Fax: +49 (0) 36 41 / 22 0-2 82
info@meditec.zeiss.com
www.meditec.zeiss.com

Carl Zeiss Meditec Inc.
5160 Hacienda Drive
Dublin, CA 94568
USA

Toll Free: (800) 3 42-98 21
Phone: +1 (925) 5 57-46 51
Fax: +1 (925) 5 57-42 17
info@meditec.zeiss.com
www.meditec.zeiss.com